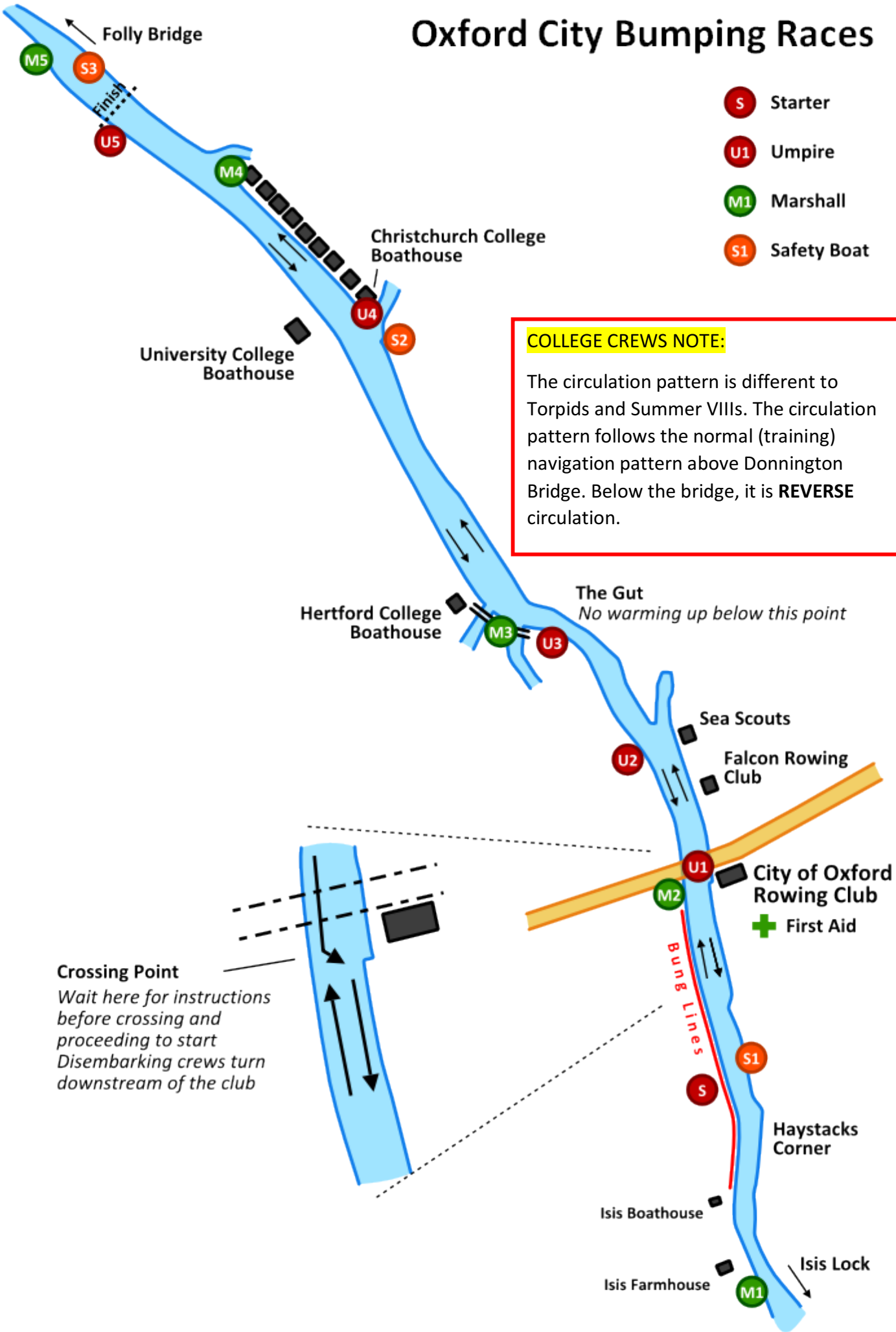


# Oxford City Bumping Races



- S Starter
- U1 Umpire
- M1 Marshall
- S1 Safety Boat

**COLLEGE CREWS NOTE:**

The circulation pattern is different to Torpids and Summer Vllls. The circulation pattern follows the normal (training) navigation pattern above Donnington Bridge. Below the bridge, it is **REVERSE** circulation.

**Crossing Point**  
 Wait here for instructions before crossing and proceeding to start  
 Disembarking crews turn downstream of the club

**The Gut**  
 No warming up below this point

+ First Aid

Bung Lines